



PAAVAI ENGINEERING COLLEGE
 (Autonomous)
 NH - 44, PACHAL, NAMAKKAL - 637 018

**STUDENT FEEDBACK ANALYSIS ON CURRICULUM & SYLLABUS -
 RESPONSE SHEET**

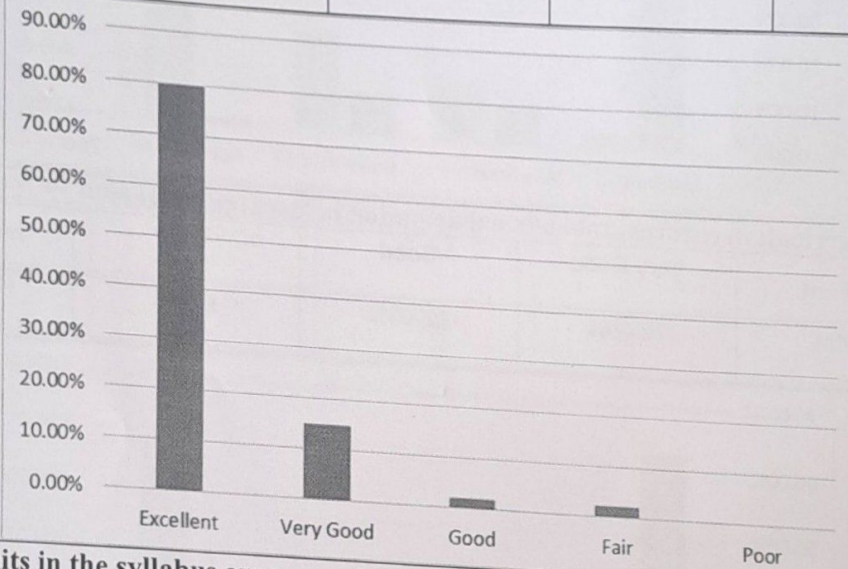
DEPARTMENT:

DEPARTMENT OF MANAGEMENT STUDIES

ACADEMIC YEAR: 2024-2025

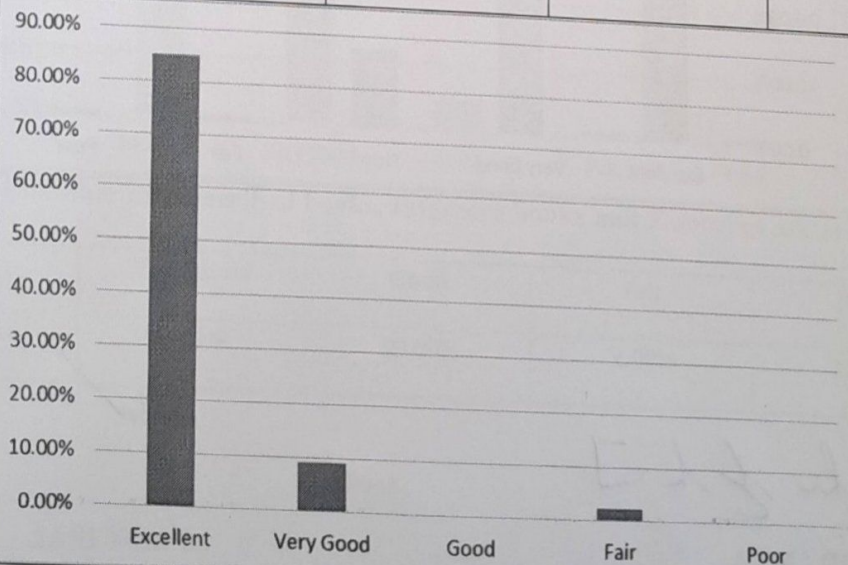
1. Curriculum and Syllabi meet the present scenario

Excellent	Very Good	Good	Fair	Poor
79.70%	15.00%	2.00%	2.33%	0.00%



2. The units in the syllabus are properly sequenced

Excellent	Very Good	Good	Fair	Poor
85.00%	9.30%	0.00%	2.33%	0.00%

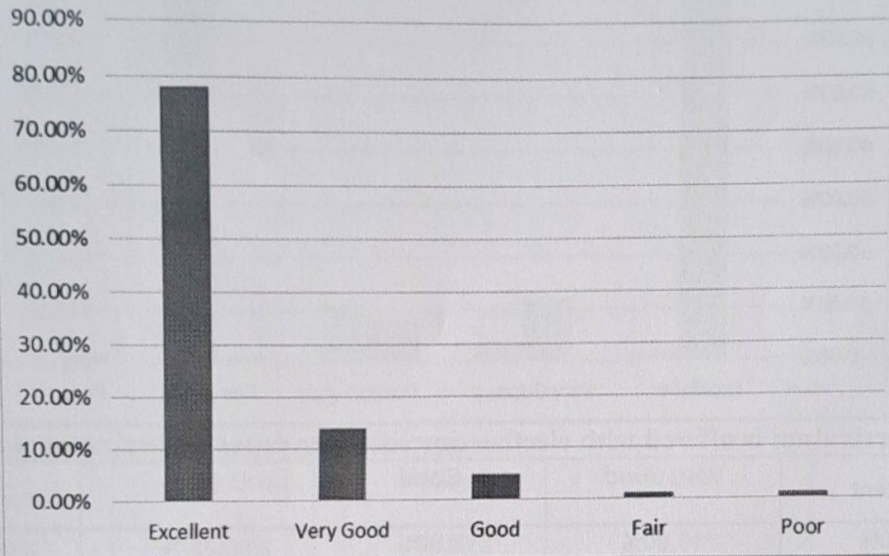


3. The allocation of the credits and its weightage to the course is balanced



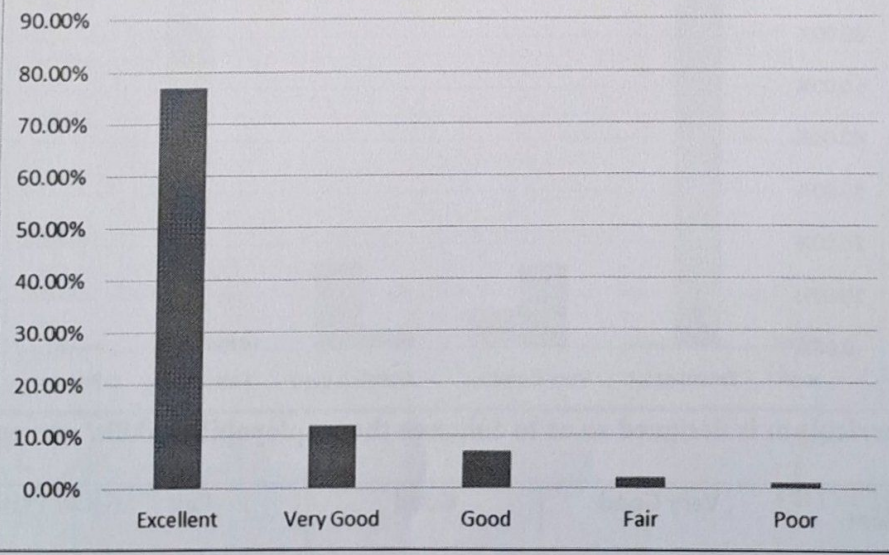
PAAVAI ENGINEERING COLLEGE
(Autonomous)
NH – 44, PACHAL, NAMAKKAL – 637 018

Excellent	Very Good	Good	Fair	Poor
78.00%	14.00%	5.00%	1.00%	1.00%



4. The course have enhanced the knowledge and the technical skills

Excellent	Very Good	Good	Fair	Poor
77.00%	12.00%	6.98%	2.00%	1.00%

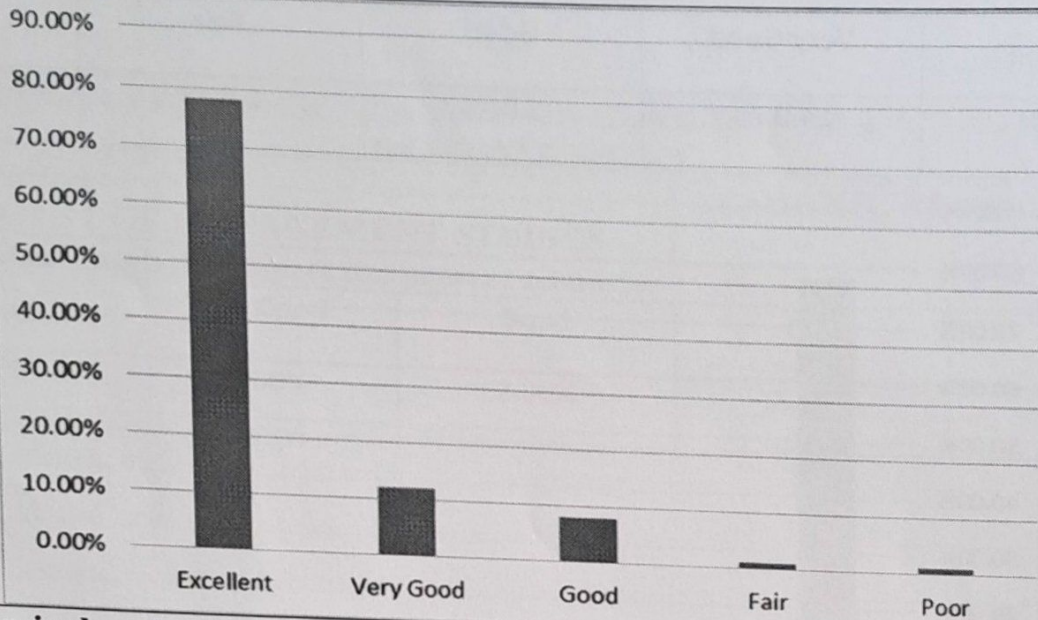


5. The curriculum bridges the gap between the industries and institute

Excellent	Very Good	Good	Fair	Poor
78.00%	12.00%	8.00%	1.00%	1.00%

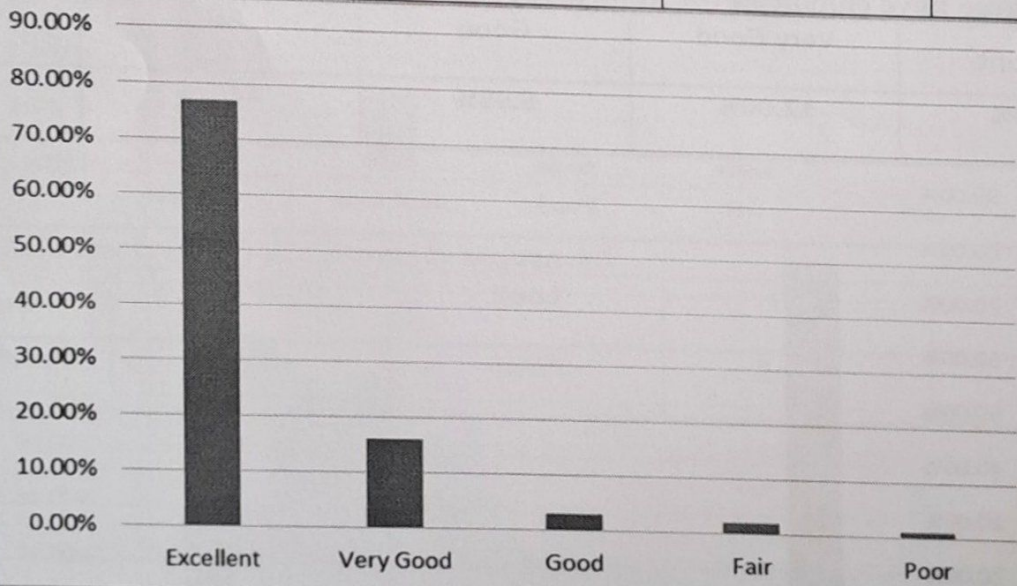


PAAVAI ENGINEERING COLLEGE
(Autonomous)
NH - 44, PACHAL, NAMAKKAL - 637 018



6. The curriculum is offered with elective courses/ inter departmental courses

Excellent	Very Good	Good	Fair	Poor
77.00%	16.00%	3.00%	2.00%	1.00%

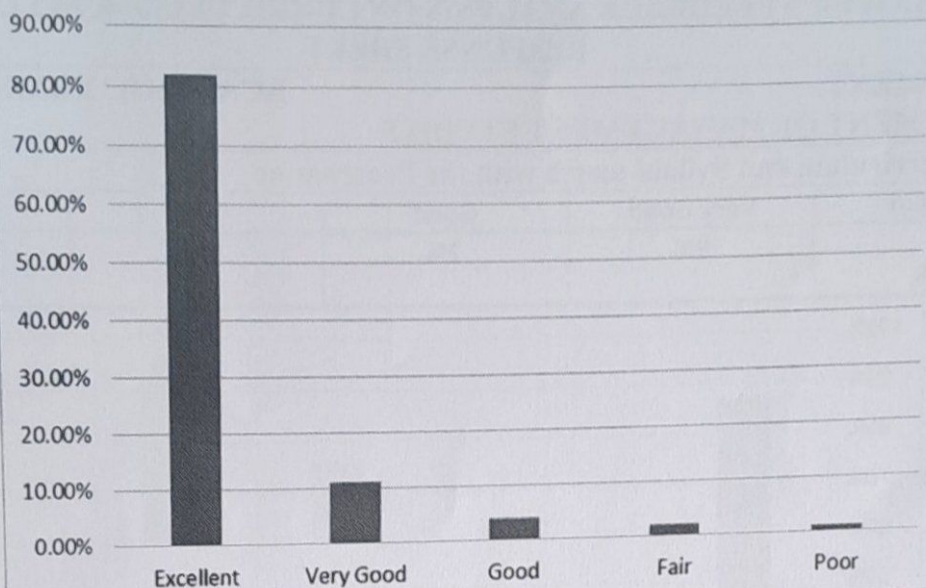


7. The curriculum is designed so as to enhance the employability skills/ entrepreneurship skills

Excellent	Very Good	Good	Fair	Poor
82.00%	11.00%	4.00%	2.00%	1.00%

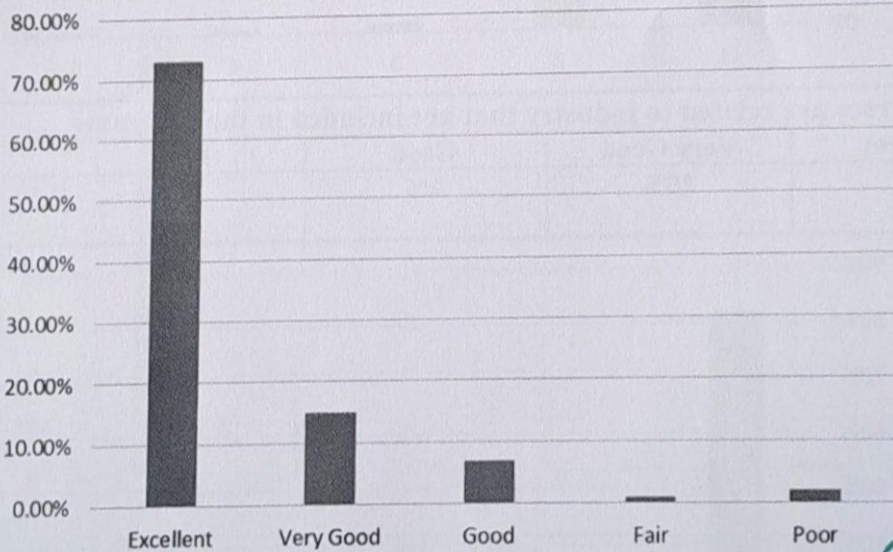


PAAVAI ENGINEERING COLLEGE
(Autonomous)
NH - 44, PACHAL, NAMAKKAL - 637 018



8. Inclusion of latest developments in the courses

Excellent	Very Good	Good	Fair	Poor
73.00%	15.00%	7.00%	1.00%	2.00%



K. S. S. S.
HOD / MBA

[Signature]
PRINCIPAL

PRINCIPAL
PAAVAI ENGINEERING COLLEGE
NH-7, PACHAL Post, NAMAKKAL Dis



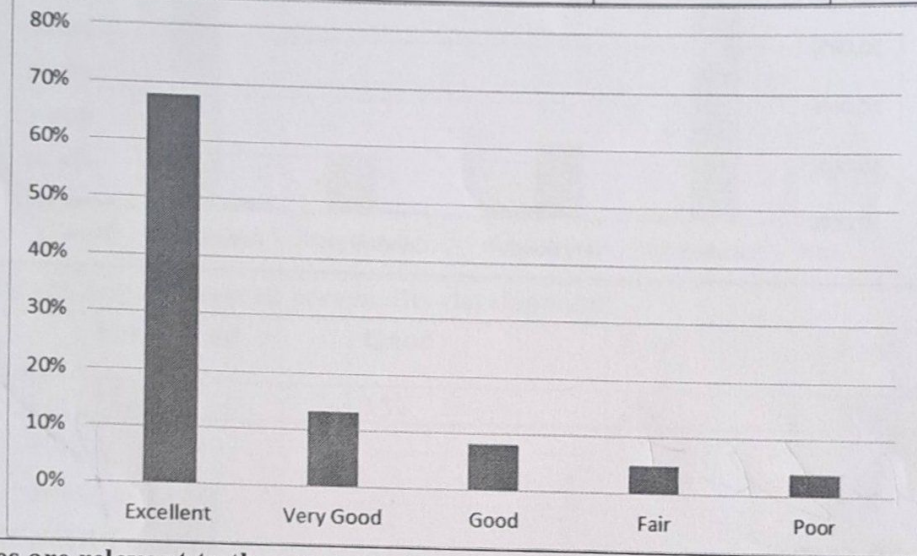
PAAVAI ENGINEERING COLLEGE
(Autonomous)
NH - 44, PACHAL, NAMAKKAL - 637 018

**FACULTY FEEDBACK ANALYSIS ON CURRICULUM & SYLLABUS -
 RESPONSE SHEET**

DEPARTMENT: DEPARTMENT OF MANAGEMENT STUDIES **ACADEMIC YEAR: 2024-2025**

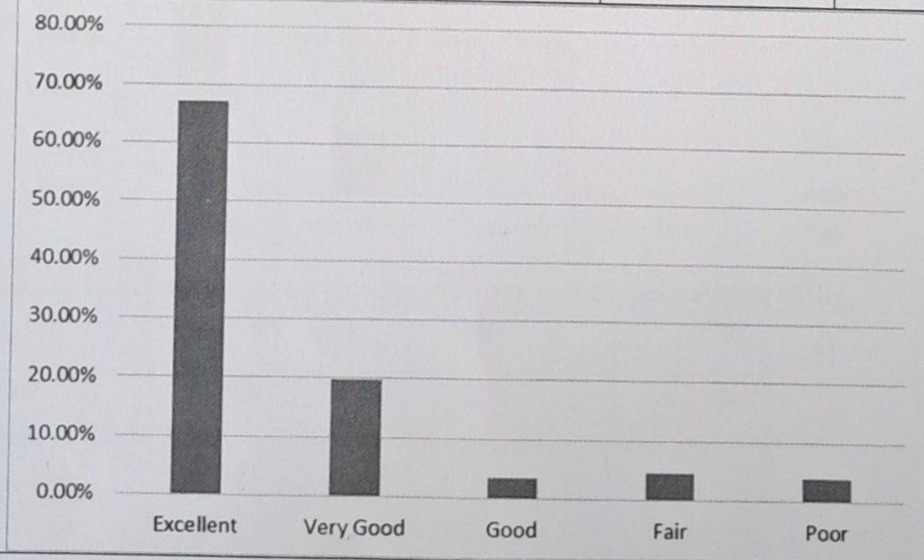
1. Curriculum and Syllabi are need based

Excellent	Very Good	Good	Fair	Poor
68%	13.33%	8.11%	5.00%	4.00%



2. Courses are relevant to the programme

Excellent	Very Good	Good	Fair	Poor
67.11%	19.78%	3.56%	4.56%	4.00%

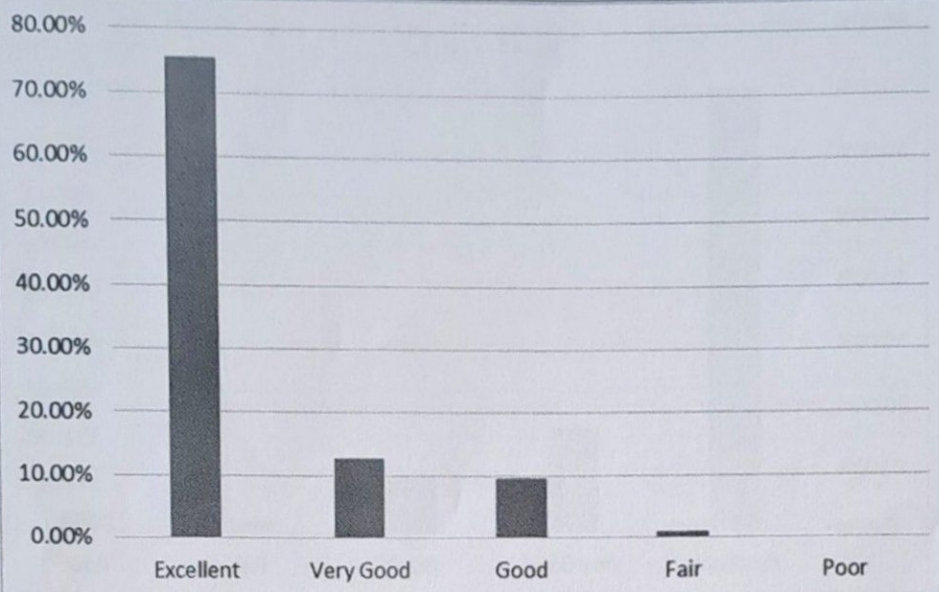


3. The course outcomes are clear and well defined

Excellent	Very Good	Good	Fair	Poor
75.60%	12.78%	9.67%	1.00%	0.00%



PAAVAI ENGINEERING COLLEGE
(Autonomous)
NH – 44, PACHAL, NAMAKKAL – 637 018



4. The course has good balance between theory and lab experiments

	Very Good	Good	Fair	Poor
Excellent				
	9.00%	15.00%	1.00%	1.00%

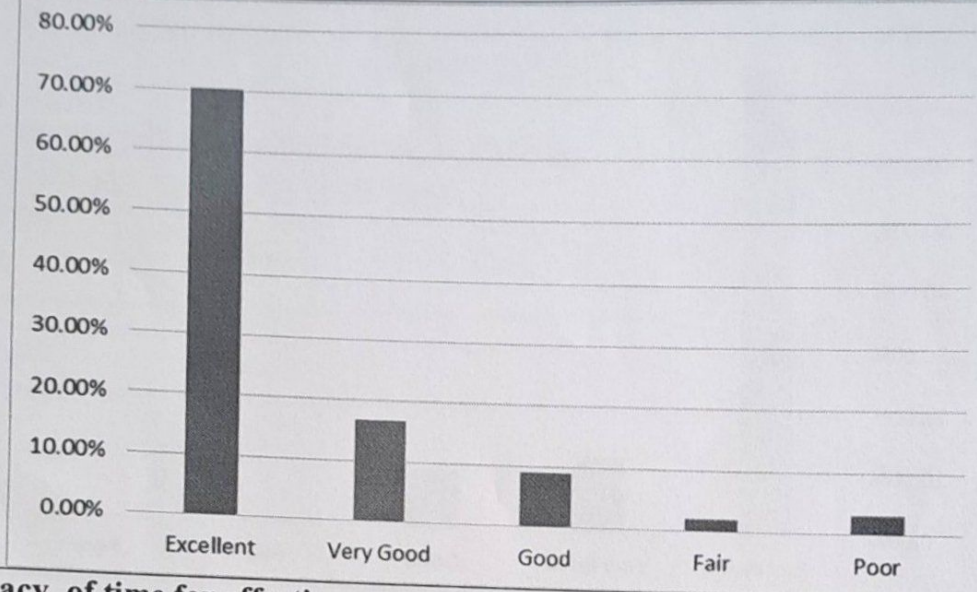


5. The syllabus covers modern and advanced topics

	Very Good	Good	Fair	Poor
Excellent				
	16.90%	9.08%	2.00%	3.00%

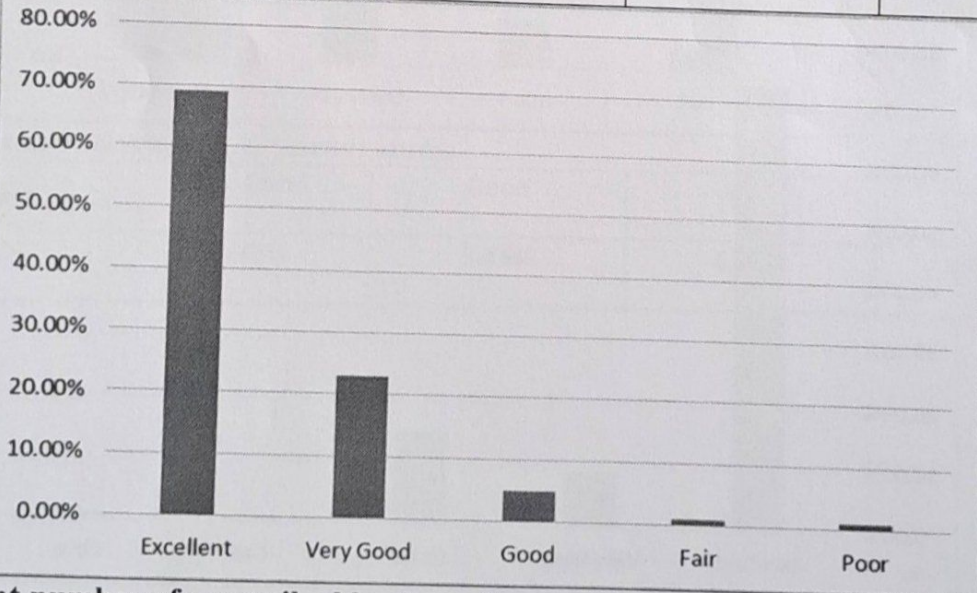


PAAVAI ENGINEERING COLLEGE
(Autonomous)
NH – 44, PACHAL, NAMAKKAL – 637 018



6. Adequacy of time for effective coverage of syllabus/ Lab experiments

Excellent	Very Good	Good	Fair	Poor
69.00%	23.00%	5.00%	1.00%	1.00%

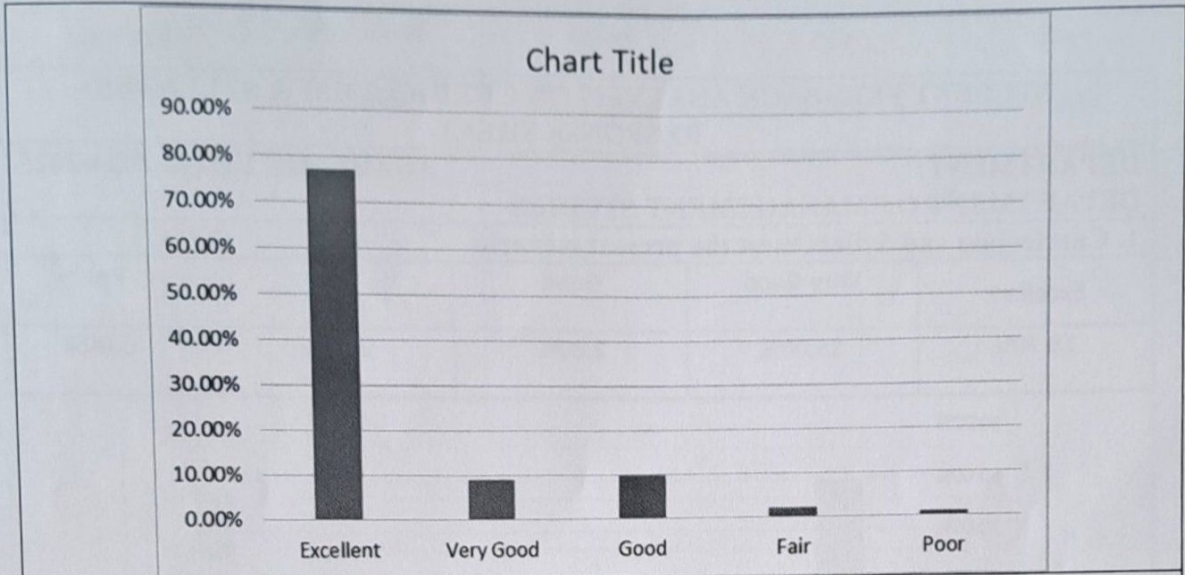


7. Sufficient number of prescribed books, reference books and E-sources are available in the library

Excellent	Very Good	Good	Fair	Poor
77.00%	9.00%	10.00%	2.00%	1.00%

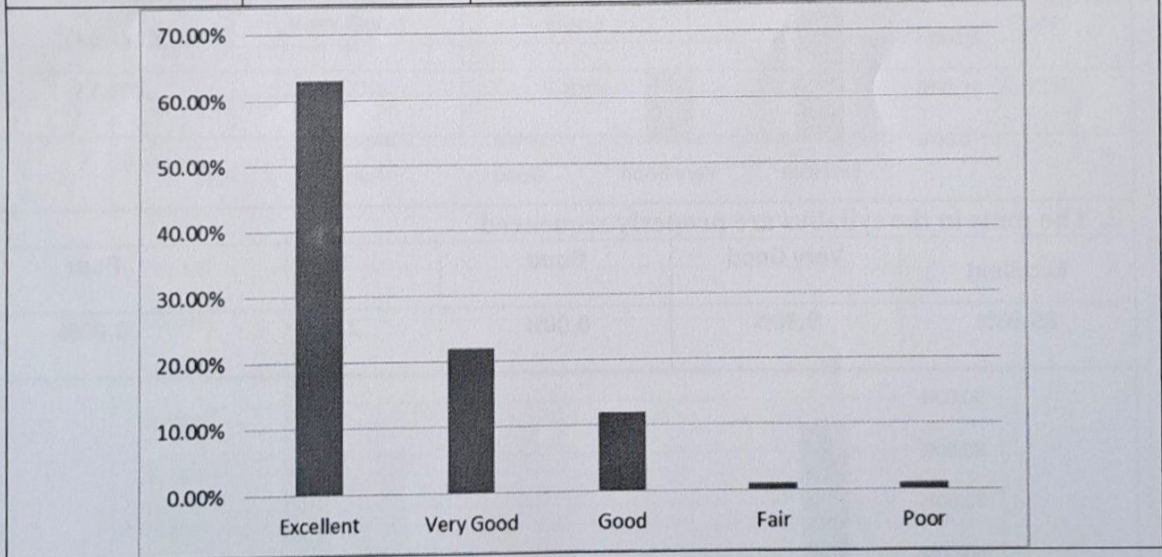


PAAVAI ENGINEERING COLLEGE
(Autonomous)
NH - 44, PACHAL, NAMAKKAL - 637 018



8. The curriculum ensures student's participation in learning process

Excellent	Very Good	Good	Fair	Poor
63.00%	22.00%	12.00%	1.00%	1.00%



K. S. S. J.

HOD / MBA

[Signature]

PRINCIPAL

PAAVAI ENGINEERING COLLEGE
 NH-7, PACHAL Post, NAMAKKAL Dis.



PAAVAI ENGINEERING COLLEGE
(Autonomous)
NH - 44, PACHAL, NAMAKKAL - 637 018

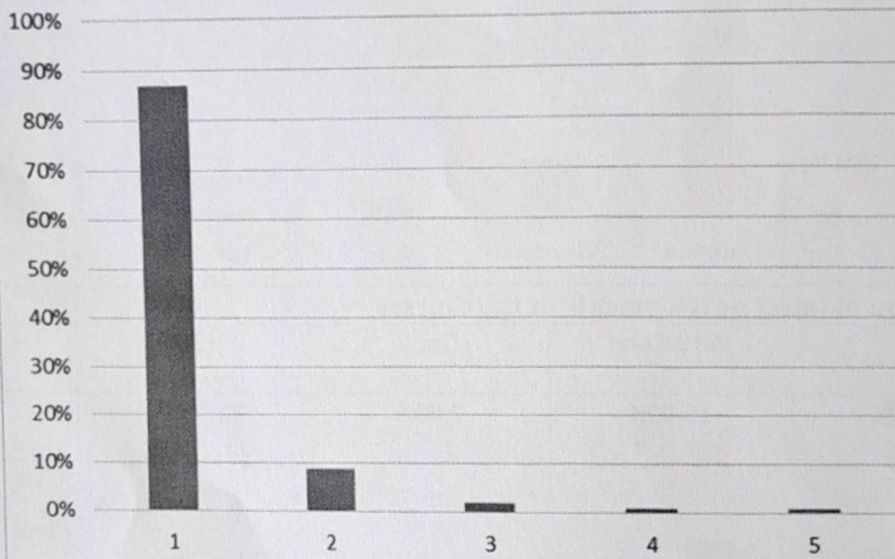
**EMPLOYER'S FEEDBACK ANALYSIS ON CURRICULUM & SYLLABUS -
 RESPONSE SHEET**

DEPARTMENT:
DEPARTMENT OF MANAGEMENT STUDIES

ACADEMIC YEAR: 2024-2025

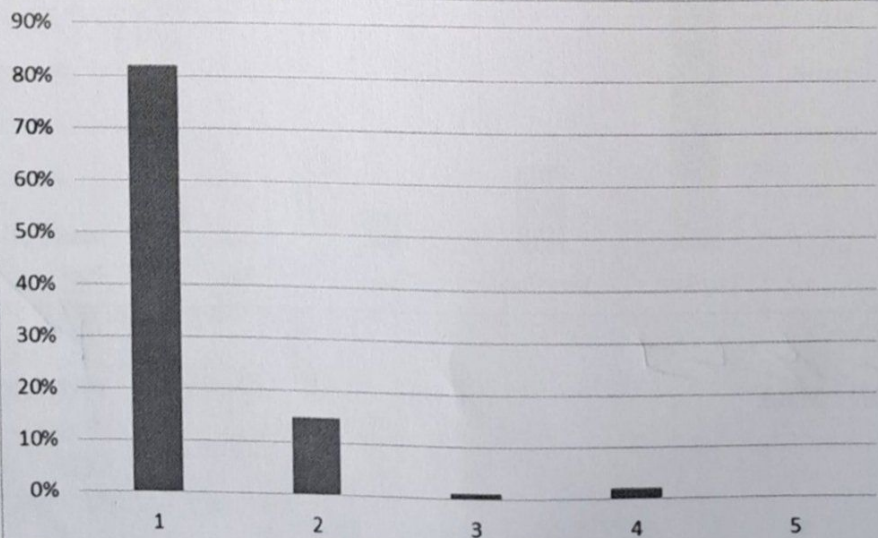
1. The Curriculum and Syllabi match with the Programme

Excellent	Very Good	Good	Fair	Poor
87%	9%	2%	1%	1%



2. The courses are related to industry that are included in the programs

Excellent	Very Good	Good	Fair	Poor
82%	15%	1%	2%	0%

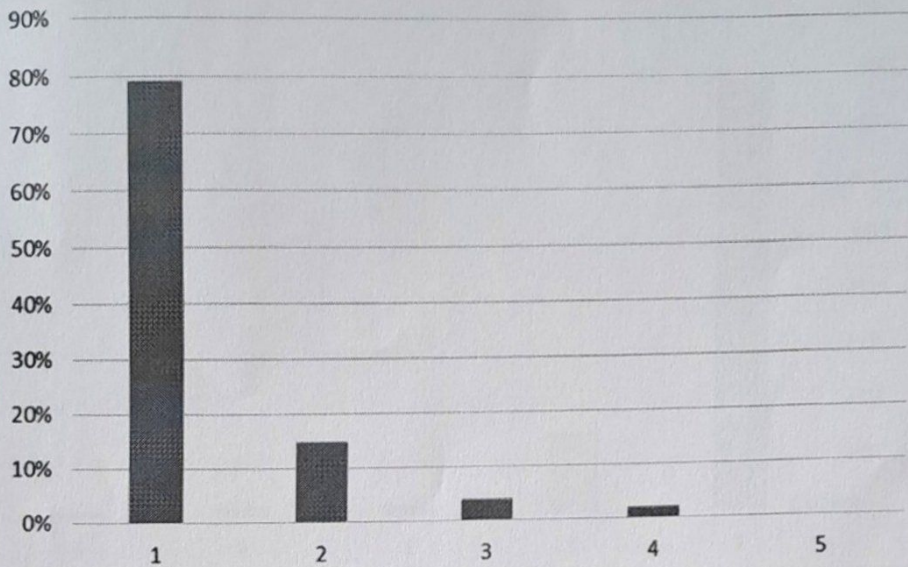


3. The courses are related with the specialization streams

Excellent	Very Good	Good	Fair	Poor
79%	15%	4%	2%	0%

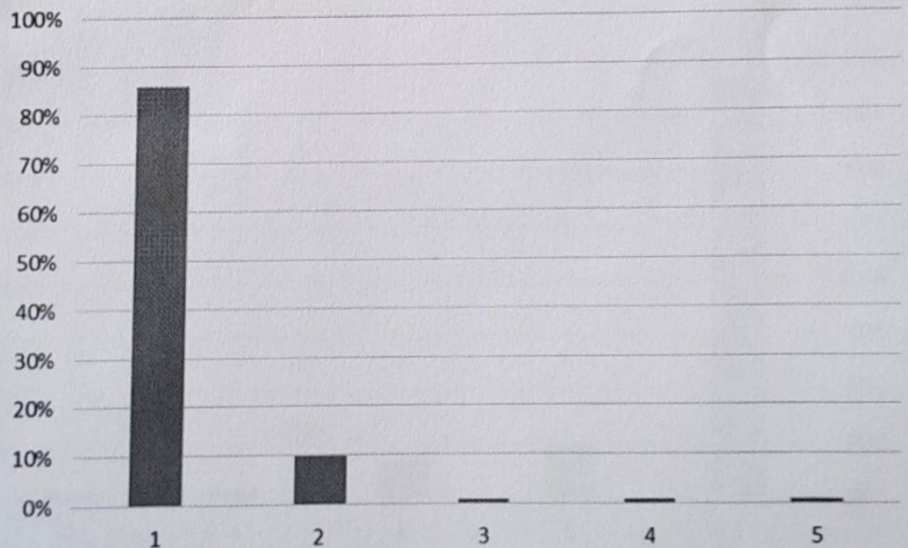


PAAVAI ENGINEERING COLLEGE
(Autonomous)
NH – 44, PACHAL, NAMAKKAL – 637 018



4. The syllabus has good balance between theory and application

Excellent	Very Good	Good	Fair	Poor
86%	10%	1%	1%	1%

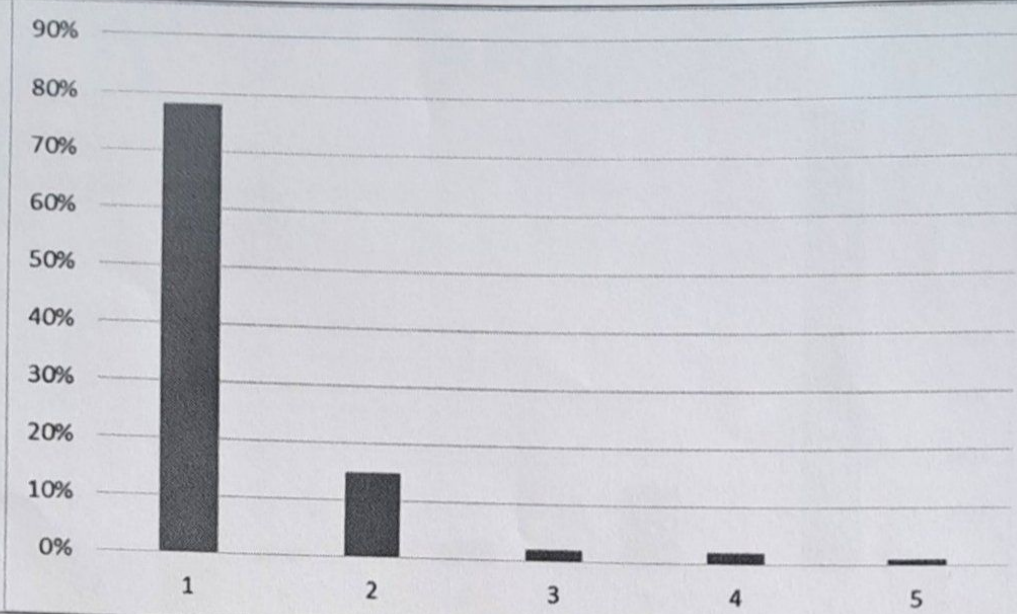


5. Incorporate technical and communication skills

Excellent	Very Good	Good	Fair	Poor
78%	15%	2%	2%	1%

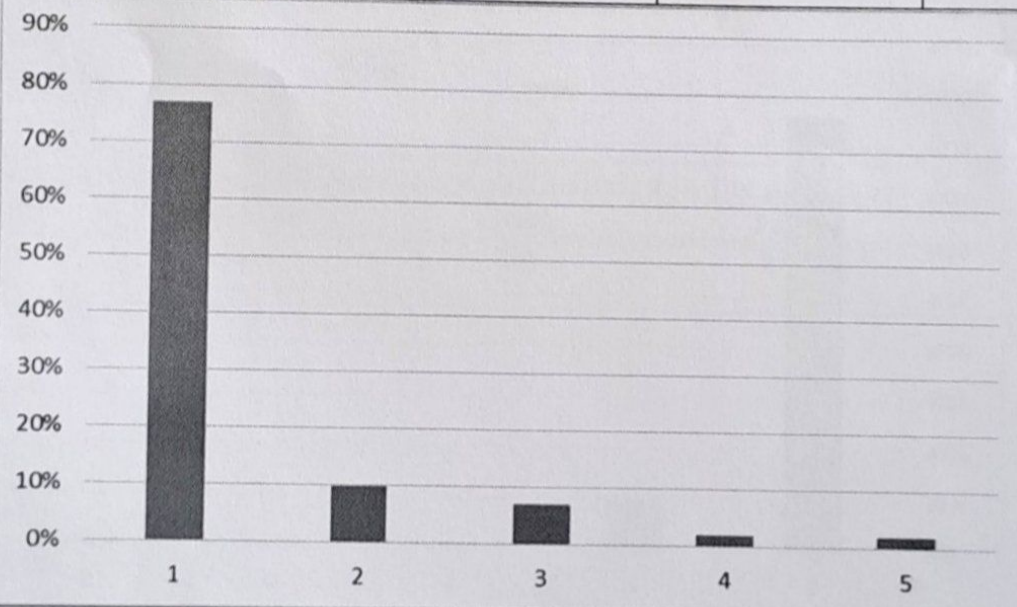


PAAVAI ENGINEERING COLLEGE
(Autonomous)
NH – 44, PACHAL, NAMAKKAL – 637 018



6. Imparts knowledge and skills required for the job market

Excellent	Very Good	Good	Fair	Poor
77%	10%	7%	2%	2%

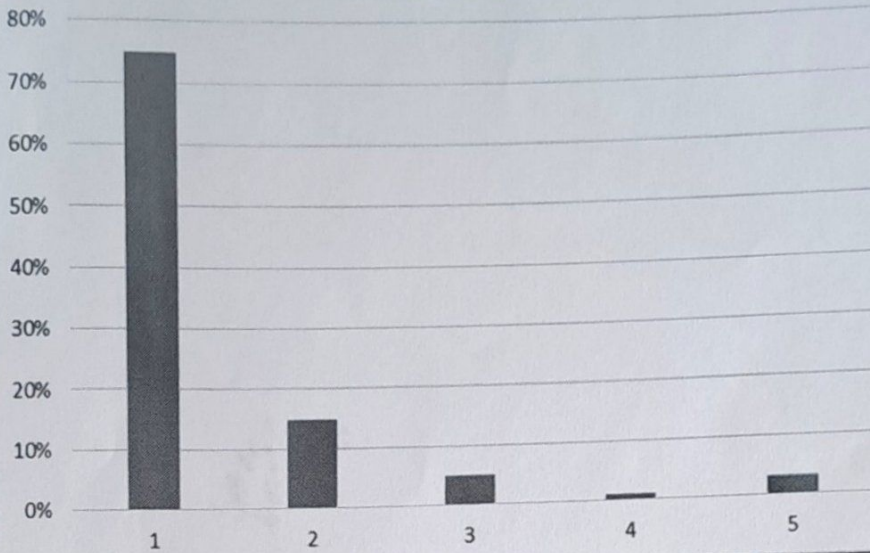


7. Curriculum develops innovative thinking

Excellent	Very Good	Good	Fair	Poor
75%	15%	5%	1%	2%

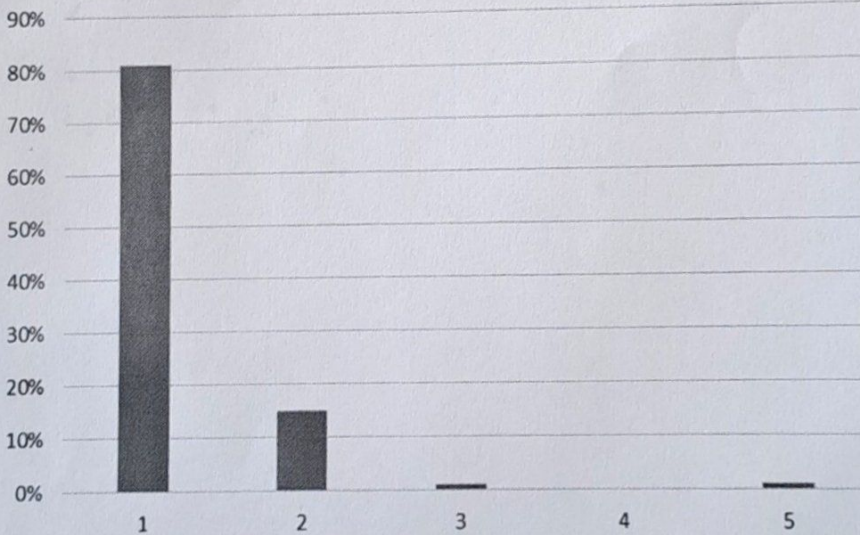


PAAVAI ENGINEERING COLLEGE
(Autonomous)
NH - 44, PACHAL, NAMAKKAL - 637 018



8. Is the curriculum relevant for employability/ makes the student competent?

Excellent	Very Good	Good	Fair	Poor
81%	15%	1%	0%	1%



K. S. S. S.

HOD / MBA

[Signature]

PRINCIPAL
PRINCIPAL

PAAVAI ENGINEERING COLLEGE
NH-7, PACHAL Post, NAMAKKAL Dis



PAAVAI ENGINEERING COLLEGE
 (Autonomous)
 NH – 44, PACHAL, NAMAKKAL – 637 018

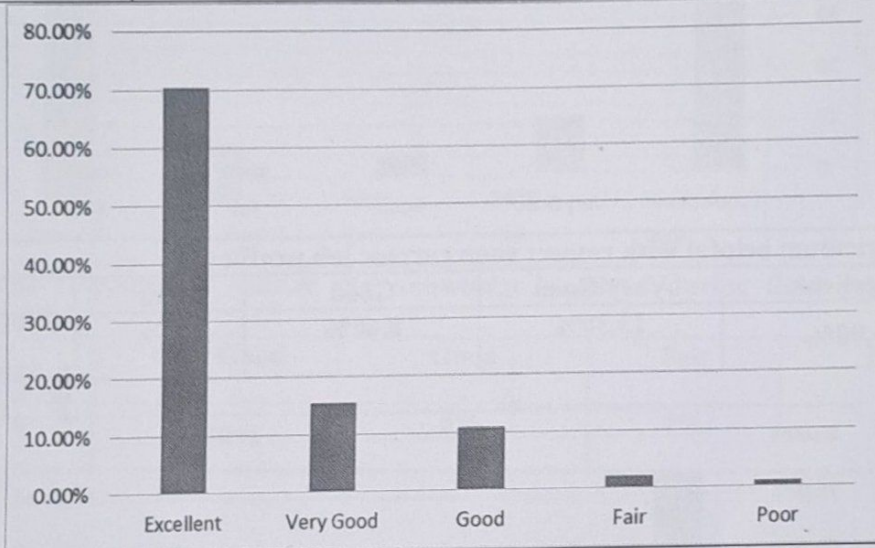
ALUMINI FEEDBACK ANALYSIS ON CURRICULUM & SYLLABUS – RESPONSE SHEET

DEPARTMENT:
DEPARTMENT OF MANAGEMENT STUDIES

ACADEMIC YEAR: 2024-2025

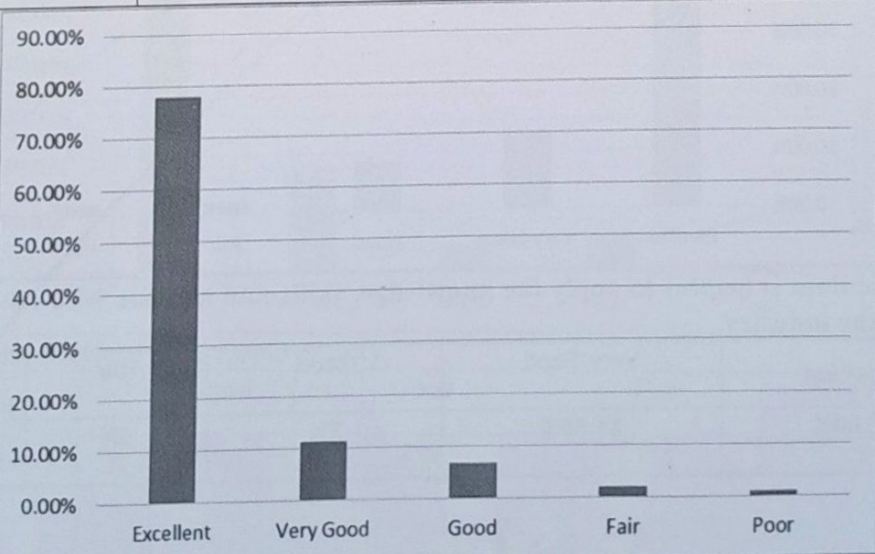
1. Curriculum is structured, comprehensive, relevant and arranged properly

Excellent	Very Good	Good	Fair	Poor
70.40%	15.50%	11.00%	2%	1%



2. Curriculum is effective in enhancing team work

Excellent	Very Good	Good	Fair	Poor
78.10%	11.30%	6.60%	2%	1%



3. Rate of relevance of syllabus to the recent industrial developments

Excellent	Very Good	Good	Fair	Poor
79.6	11.21	4.1	2.3	2

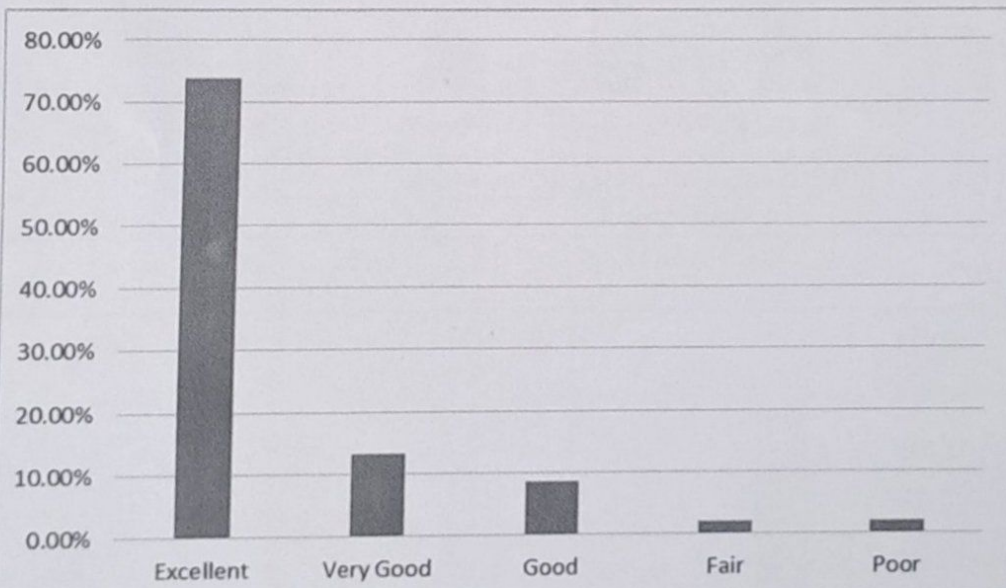


PAAVAI ENGINEERING COLLEGE
(Autonomous)
NH - 44, PACHAL, NAMAKKAL - 637 018



4. Is curriculum helpful with respect your current job profile

Excellent	Very Good	Good	Fair	Poor
73.90%	13.30%	8.60%	2%	2%

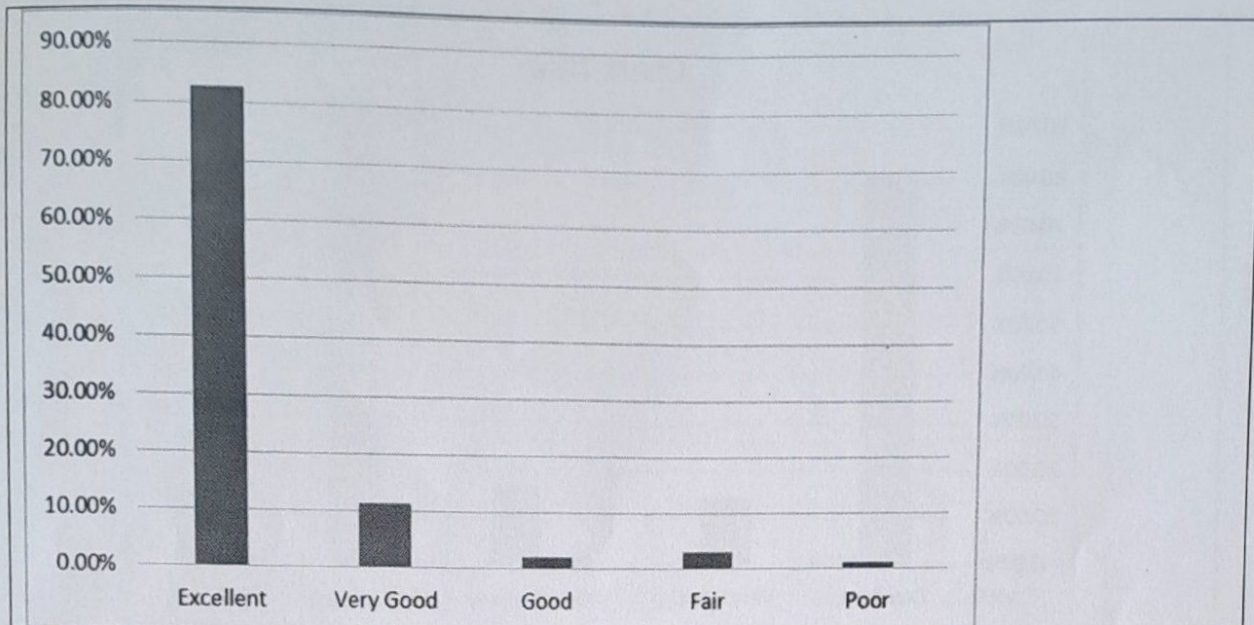


5. Curriculum is helpful to apply the knowledge, skills and abilities with advanced tools used in the industry.

Excellent	Very Good	Good	Fair	Poor
82.60%	11.30%	2%	3%	1%

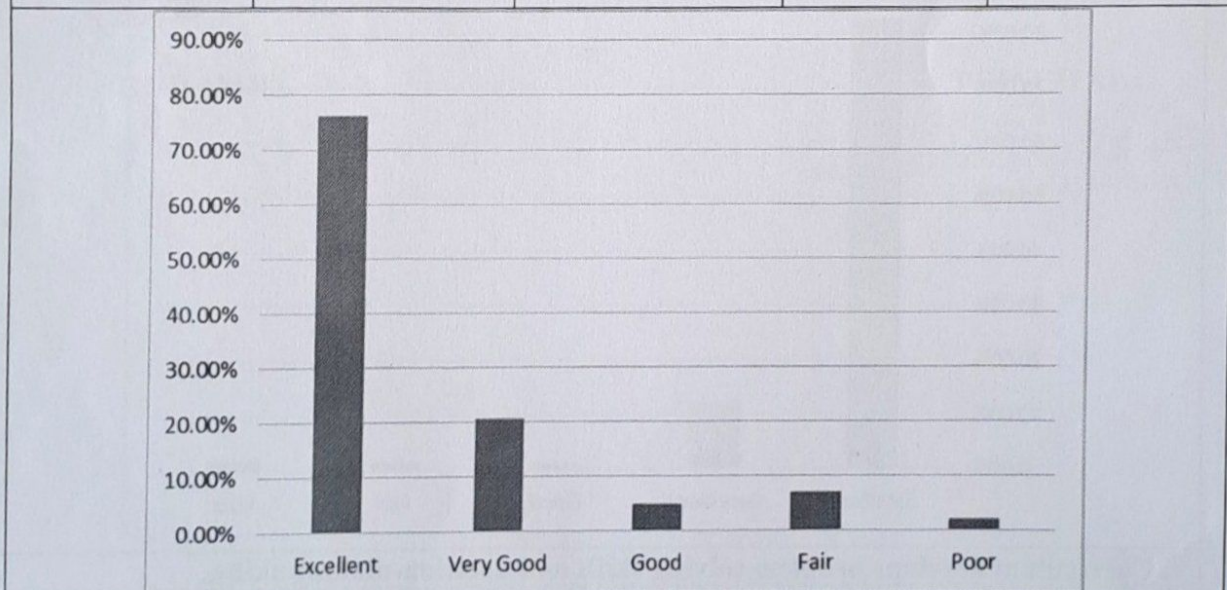


PAAVAI ENGINEERING COLLEGE
(Autonomous)
NH – 44, PACHAL, NAMAKKAL – 637 018



6. Rate the relevance of skillset and knowledge acquired during final year project implementation.

Excellent	Very Good	Good	Fair	Poor
76.20%	20.70%	5%	7%	2%

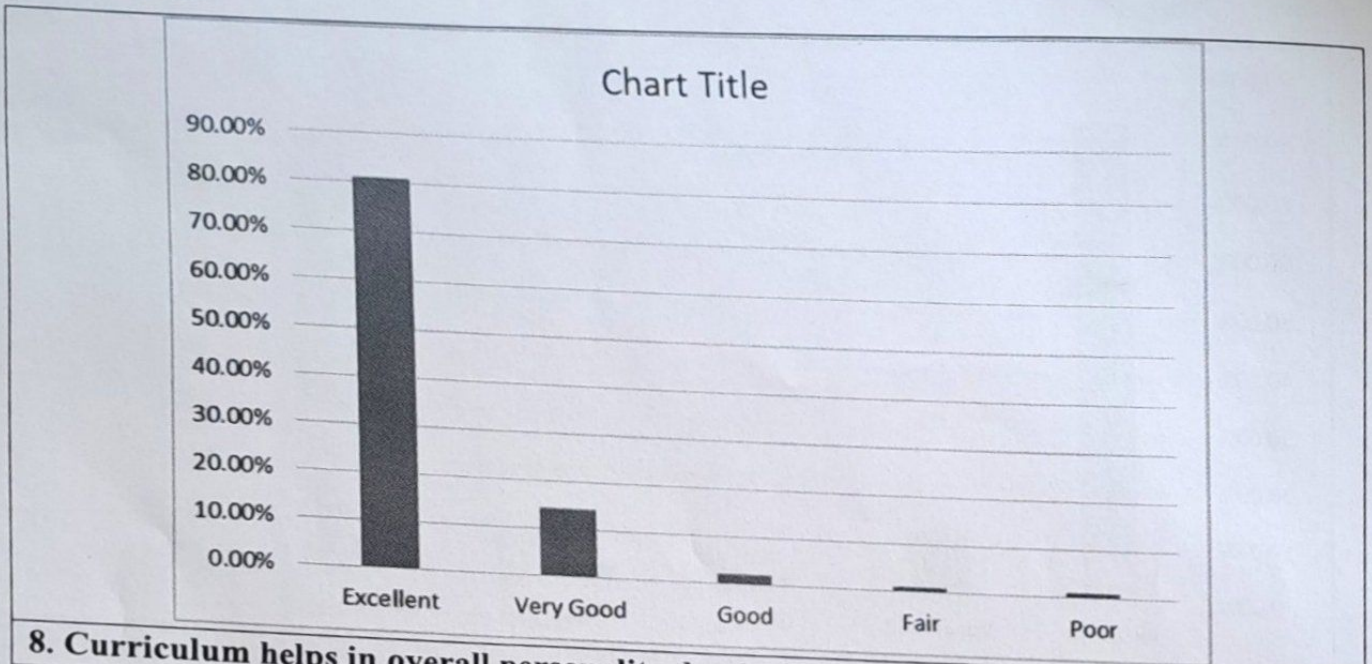


7. Curriculum is effective in employability.

Excellent	Very Good	Good	Fair	Poor
80.90%	14.30%	2%	1%	1%

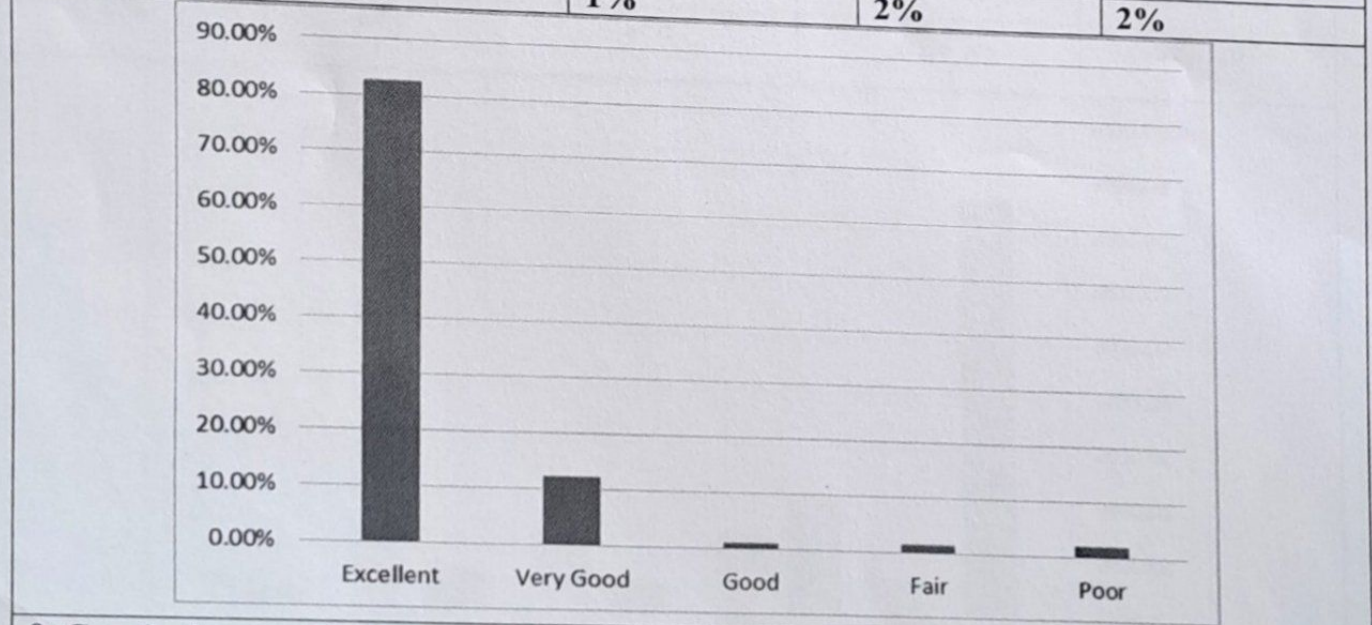


PAAVAI ENGINEERING COLLEGE
(Autonomous)
NH – 44, PACHAL, NAMAKKAL – 637 018



8. Curriculum helps in overall personality development.

Excellent	Very Good	Good	Fair	Poor
82.60%	12.30%	1%	2%	2%

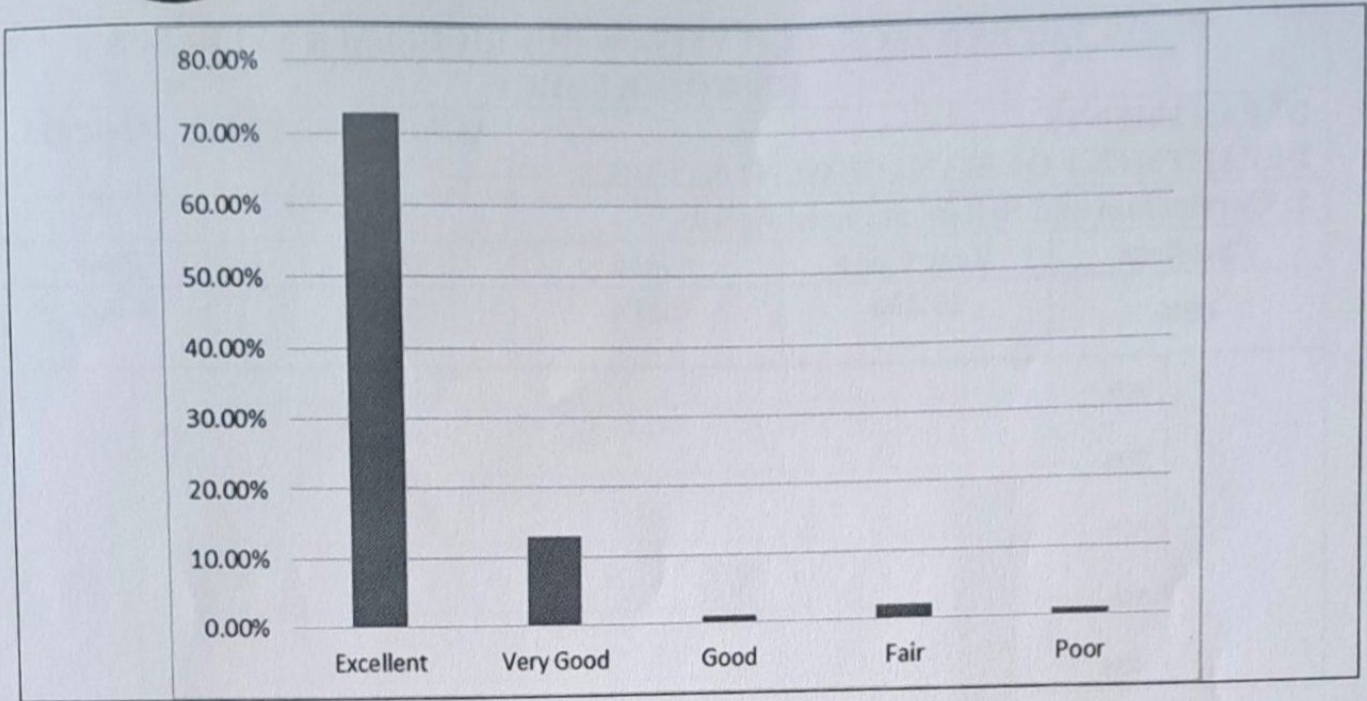


9. Curriculum develops problem solving skills and decision-making skills..

Excellent	Very Good	Good	Fair	Poor
72.90%	13.10%	1%	2%	1%



PAAVAI ENGINEERING COLLEGE
(Autonomous)
NH - 44, PACHAL, NAMAKKAL - 637 018



Kabu S. S.

HOD / MBA

[Signature]

PRINCIPAL

PRINCIPAL
PAAVAI ENGINEERING COLLEGE
14.7 PACHAL Post, NAMAKKAL Dis.